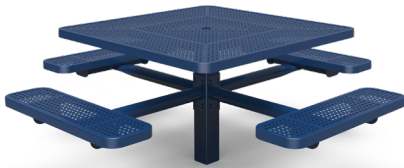


Site Furnishings

PICNIC TABLES

Features

These durable perforated steel picnic tables in a range of sizes, shapes, and styles provide a place for family, friends, and little ones to dine, socialize, or just relax. If you're looking for a fixed amenity that will stand the test of time, our in-ground tables are the perfect choice. If you need a more flexible solution so that you can reposition or store your tables for the season, our portable tables are a sturdy option. A powder and plastisol coating process lets you customize the color of your picnic table and ensure it won't rust, crack, peel, or warp over time.



46" In-ground (1,17m) Square Table



46" In-ground ADA Square Table



6' (1,93m) Portable Rectangle Table



8' (2,44m) Portable ADA Rectangle Table



Individual Seat Table

Square Table

- 40" (1,02m) or 46" (1,17m) lengths
- 40" available in-ground mounted only
- 46" available in portable or in-ground mounted

ADA Square Table

- Three individual seats and one open side for accessibility
- 46" (1,17m) length
- In-ground mounted

Rectangle Table

- 6' (1,83m) or 8' (2,44m) lengths
- Portable and in-ground available

ADA Rectangle Table

- Extended tabletop on one end for accessibility
- 8' (2,44m) length
- Portable model

Separate Bench Table

- Two benches independent of table
- 6' (1,83m) or 8' (2,44m) lengths
- In-ground mounted

ADA Separate Bench Table

- Extended tabletop on one end for accessibility
- Two benches independent of table
- 8' (2,44m) length
- In-ground mounted

Individual Seat Table

- Four individual benches connected to table
- 7' (2,13m) length
- In-ground mounted

Site Furnishings *continued*



Round Table



Tot Table

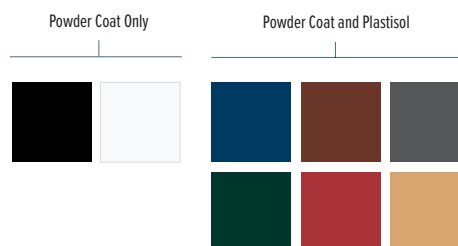
Round Table

- Four individual benches connected to table
- 46" (1,17m) length
- Portable model

Tot Table

- Set at a shorter height for youngsters
- Four individual benches connected to table
- 46" (1,17m) length
- Portable model

COLOR OPTIONS



| Description | Item Number | Size | Weight | Materials |
|---|-------------|---|-------------------------|---|
| Square Table 40" (1,02) In-Ground | ZZPQ215Q | 71in x 71in x 30in (1.81m x 1.81m x 0.76m) | 279 lbs (126.666 kg) | Frame: 4" x 4" x 11 gauge steel tubing Tops/Seats: 12 gauge sheet steel Hardware: Stainless Steel |
| Square Table 46" (1,17m) In-Ground | ZZPQ230Q | 78in x 78in x 30in (1.97m x 1.97m x 0.76m) | 295 lbs (133.93 kg) | Frame: 4" x 4" x 11 gauge steel tubing Tops/Seats: 12 gauge sheet steel Hardware: Stainless Steel |
| Square Table 46" (1,17m) Portable | ZZPQ140Q | 74in x 74in x 29in (1.89m x 1.89m x 0.74m) | 248 lbs (112.592 kg) | Frame: 1 5/8" of x 14 gauge steel tubing Tops/Seats: 12 gauge sheet steel Hardware: Stainless Steel |
| ADA Square Table 46" (1,17m) In-Ground | ZZPQ235Q | 78in x 62in x 30in (1.97m x 1.58m x 0.76m) | 263 lbs (119.402 kg) | Frame: 4" x 4" x 11 gauge steel tubing Tops/Seats: 12 gauge sheet steel Hardware: Stainless Steel |
| Rectangle Table 6' (1,83m) In-Ground | ZZPQ201Q | 72in x 58in x 30in (1.84m x 1.46m x 0.76m) | 314 lbs (142.556 kg) | Frame: 4" x 4" 11 gauge steel tubing Tops/Seats: 12 gauge sheet steel Hardware: Stainless Steel |
| Rectangle Table 6' (1,83m) Portable | ZZPQ106Q | 72in x 70in x 30in (1.84m x 1.77m x 0.75m) | 257 lbs (116.678 kg) | Frame: 2 3/8" of x 13 gauge steel tubing Seats/Tops: 12 gauge sheet metal Hardware: Stainless Steel |
| Rectangle Table 8' (2,44m) Portable | ZZPQ111Q | 96in x 70in x 30in (2.45m x 1.77m x 0.75m) | 333 lbs (151.182 kg) | Frame: 2 3/8" of x 13 gauge steel tubing Seats/Tops: 12 gauge sheet metal Hardware: Stainless Steel |
| ADA Rectangle Table 8' (2,44m) Portable | ZZPQ115Q | 96in x 70in x 30in (2.45m x 1.77m x 0.75m) | 308 lbs (139.832 kg) | Frame: 2 3/8" of x 13 gauge steel tubing Seats/Tops: 12 gauge sheet metal Hardware: Stainless Steel |
| Separate Bench Table 6' (1,83m) In-Ground | ZZPQ205Q | 72in x 63in x 30in (1.84m x 1.61m x 0.76m) | 334 lbs (151.636 kg) | Frame: 4" x 4" 11 gauge steel tubing Tops/Seats: 12 gauge sheet steel Hardware: Stainless Steel |
| Separate Bench Table 8' (2,44m) In-Ground | ZZPQ206Q | 96in x 63in x 30in (2.45m x 1.61m x 0.76m) | 410 lbs (186.14 kg) | Frame: 4" x 4" 11 gauge steel tubing Tops/Seats: 12 gauge sheet steel Hardware: Stainless Steel |
| ADA Separate Bench Table 8' (2,44m) In-Ground | ZZPQ207Q | 96in x 63in x 32in (2.45m x 1.61m x 0.8m) | 382 lbs (173.428 kg) | Frame: 4" x 4" 11 gauge steel tubing Tops/Seats: 12 gauge sheet steel Hardware: Stainless Steel |
| Individual Seat Table 7' Surface Mount | ZZPQ135Q | 84in x 65in x 30in (2.14m x 1.64m x 0.76m) | 311 lbs (141.194 kg) | Frame: 12 gauge x 2 7/8" of steel tubing Tops/Seats: 12 gauge sheet steel Hardware: Stainless Steel |
| Round Table 46" (1,17m) Portable | ZZPQ150Q | 79in x 79in x 29in (2m x 2m x 0.74m) | 224 lbs (101.696 kg) | Frame: 1 5/8" of x 14 gauge steel tubing Tops/Seats: 12 gauge sheet steel Hardware: Stainless Steel |
| Tot Table 46" (1,17m) Portable | ZZPQ171Q | 69in x 69in x 20in (1.75m x 1.75m x 0.5m) | 229 lbs (103.966 kg) | Frame: 1 5/8" of x 14 gauge steel tubing Tops/Seats: 12 gauge sheet steel Hardware: Stainless Steel |

Site Furnishings *continued*

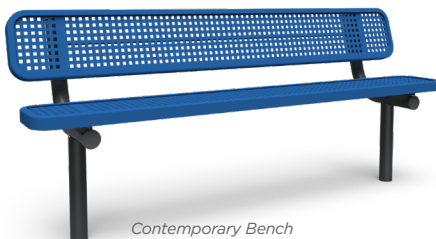
BENCHES

Features

An active day at the park will have everyone looking for a place to sit back and rest. Our perforated steel benches provide a strong, yet aesthetically pleasing option for any play space. With a variety of lengths and styles to choose from, and portable, in-ground, or surface-mounted options, there's a bench to meet your every requirement. A powder and plastisol coating process lets you further customize your bench with color and ensures it won't rust, crack, peel, or warp over time.



Extendable Post Bench (Shown with 2 sections)



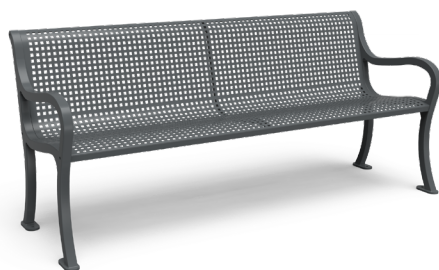
Contemporary Bench



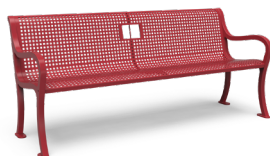
Backless Contemporary Bench



Modern Bench



Traditional Bench



Traditional Dedication Bench

Extendable Post Bench

- 3' (0,91m) length
- Add on sections available to customize bench length
- In-ground and surface-mounted available

Contemporary Bench

- Curved edges for contemporary aesthetic
- 6' (1,83m) or 8' (2,44m) fixed lengths
- Portable, in-ground, or surface-mounted available

Backless Contemporary Bench

- Curved edges for contemporary aesthetic
- 6' (1,83m) or 8' (2,44m) fixed lengths
- Portable, in-ground, or surface-mounted available

Modern Bench

- Clean lines for modern aesthetic
- 6' (1,83m) length
- Portable/surface-mounted model

Traditional Bench

- Classic style
- 6' (1,83m) length
- Portable/surface-mounted model

Traditional Dedication Bench

- Brushed stainless steel plaque holder
- 6' (1,83m) length
- Portable/surface-mounted model

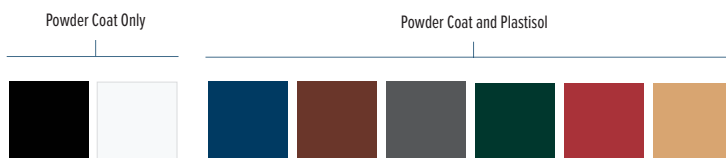
Optional Bolt-On Arm Rest

- Easy add-on feature
- Compatible with the Contemporary bench



Site Furnishings *continued*

COLOR OPTIONS



| Description | Item Number | Size | Weight | Materials |
|---|-------------|---|------------------------|--|
| Extendable Post Bench 3' (0,91m) Surface Mount Bench | ZZPQT00 | 39in x 23in x 34in (0.99m x 0.58m x 0.86m) | 110 lbs (49.94 kg) | Frame: 5" steel tubing Seats/Back: 12 gauge sheet steel Hardware: Stainless Steel Hardware |
| Add-On Extendable Post Bench 3' (0,91m) Surface Mount Bench | ZZPQT01 | 39in x 23in x 34in (0.99m x 0.58m x 0.86m) | 75 lbs (34.05 kg) | Frame: 5" steel tubing Seats/Back: 12 gauge sheet steel Hardware: Stainless Steel Hardware |
| Extendable Post Bench 3' (0,91m) Bench | ZZPQT05 | 39in x 23in x 34in (0.99m x 0.58m x 0.86m) | 110 lbs (49.94 kg) | Frame: 5" steel tubing Seats/Back: 12 gauge sheet steel Hardware: Stainless Steel Hardware |
| Add-On Extendable Post Bench 3' (0,91m) Bench | ZZPQT06 | 39in x 23in x 34in (0.99m x 0.58m x 0.86m) | 75 lbs (34.05 kg) | Frame: 5" steel tubing Seats/Back: 12 gauge sheet steel Hardware: Stainless Steel Hardware |
| Contemporary 6' (1,83m) Bench | ZZPQ303Q | 72in x 15in x 32in (1.84m x 0.38m x 0.81m) | 125 lbs (56.75 kg) | Frame: 2 3/8" of x 12 gauge steel tubing Seats/Back: 12 gauge sheet steel Hardware: Stainless Steel Hardware |
| Contemporary 6' (1,83m) Portable Bench | ZZPQ300Q | 72in x 15in x 32in (1.84m x 0.38m x 0.81m) | 126 lbs (57.204 kg) | Frame: 2 3/8" of x 12 gauge steel tubing Seats/Back: 12 gauge sheet steel Hardware: Stainless Steel Hardware |
| Contemporary 6' (1,83m) Surface Mount Bench | ZZPQ306Q | 72in x 15in x 32in (1.84m x 0.38m x 0.81m) | 119 lbs (54.026 kg) | Frame: 2 3/8" of x 12 gauge steel tubing Seats/Back: 12 gauge sheet steel Hardware: Stainless Steel Hardware |
| Contemporary 8' (2,44m) Bench | ZZPQ315Q | 96in x 15in x 32in (2.45m x 0.38m x 0.81m) | 153 lbs (69.462 kg) | Frame: 2 3/8" of x 12 gauge steel tubing Seats/Back: 12 gauge sheet steel Hardware: Stainless Steel Hardware |
| Contemporary 8' (2,44m) Portable Bench | ZZPQ312Q | 96in x 15in x 32in (2.45m x 0.38m x 0.81m) | 154 lbs (69.916 kg) | Frame: 2 3/8" of x 12 gauge steel tubing Seats/Back: 12 gauge sheet steel Hardware: Stainless Steel Hardware |
| Contemporary 8' (2,44m) Surface Mount Bench | ZZPQ318Q | 96in x 15in x 32in (2.45m x 0.38m x 0.81m) | 147 lbs (66.738 kg) | Frame: 2 3/8" of x 12 gauge steel tubing Seats/Back: 12 gauge sheet steel Hardware: Stainless Steel Hardware |
| Backless Contemporary 6' (1,83m) Bench | ZZPQ304Q | 72in x 10in x 19in (1.84m x 0.26m x 0.48m) | 69 lbs (31.326 kg) | Frame: 2 3/8" of x 12 gauge steel tubing Seats/Back: 12 gauge sheet steel Hardware: Stainless Steel Hardware |
| Backless Contemporary 6' (1,83m) Portable Bench | ZZPQ301Q | 72in x 10in x 19in (1.84m x 0.26m x 0.48m) | 70 lbs (31.78 kg) | Frame: 2 3/8" of x 12 gauge steel tubing Seats/Back: 12 gauge sheet steel Hardware: Stainless Steel Hardware |
| Backless Contemporary 6' (1,83m) Surface Mount Bench | ZZPQ307Q | 72in x 10in x 19in (1.84m x 0.26m x 0.48m) | 63 lbs (28.602 kg) | Frame: 2 3/8" of x 12 gauge steel tubing Seats/Back: 12 gauge sheet steel Hardware: Stainless Steel Hardware |
| Backless Contemporary 8' (2,44m) Bench | ZZPQ316Q | 96in x 10in x 19in (2.45m x 0.26m x 0.48m) | 83 lbs (37.682 kg) | Frame: 2 3/8" of x 12 gauge steel tubing Seats/Back: 12 gauge sheet steel Hardware: Stainless Steel Hardware |
| Backless Contemporary 8' (2,44m) Portable Bench | ZZPQ313Q | 96in x 10in x 19in (2.45m x 0.26m x 0.48m) | 90 lbs (40.86 kg) | Frame: 2 3/8" of x 12 gauge steel tubing Seats/Back: 12 gauge sheet steel Hardware: Stainless Steel Hardware |
| Backless Contemporary 8' (2,44m) Surface Mount Bench | ZZPQ319Q | 96in x 10in x 19in (2.45m x 0.26m x 0.48m) | 77 lbs (34.958 kg) | Frame: 2 3/8" of x 12 gauge steel tubing Seats/Back: 12 gauge sheet steel Hardware: Stainless Steel Hardware |
| Traditional 6' (1,83m) Bench | ZZPQC42Q | 72in x 28in x 34in (1.83m x 0.7m x 0.85m) | 157 lbs (71.278 kg) | Frame: 319 Cast Aluminum Seat: 10 gauge sheet steel Hardware: Stainless Steel |
| Traditional Dedication 6' (1,83m) Bench | ZZPQS41Q | 72in x 27in x 34in (1.83m x 0.69m x 0.85m) | 140 lbs (63.56 kg) | Frame: 319 Cast Aluminum Seat: 10 gauge sheet steel Plaque: 4" x 6" 304 brushed stainless Hardware: Stainless Steel |
| Modern 6' (1,83m) Bench | ZZPQW42Q | 75in x 27in x 34in (1.91m x 0.69m x 0.85m) | 159 lbs (72.186 kg) | Frame: 319 Cast Aluminum Seat: 10 gauge sheet steel Hardware: Stainless Steel |
| Bolt-On Arm Rest Bench | ZZPQ345Q | 0in x 0in x 0in (0m x 0m x 0m) | lbs (0 kg) | |

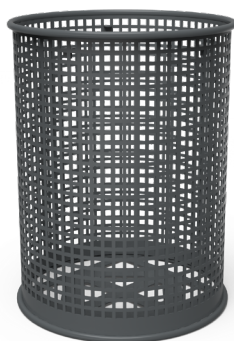
RECEPTACLES

Features

Keeping your park or public play space clean is key to success. Add form and function to your space with this selection of waste receptacles. The exterior of our trash and recycling receptacles is made of a sturdy, perforated steel for superior durability, with both portable and surface-mounted options. We also have a variety of receptacle tops and accessories to meet your needs. Our powder coating process will further ensure your receptacle doesn't rust, crack, peel, or warp over time.



Post Receptacle



Traditional Receptacle



Recycle Flat Top



Recycle Dome Top



Trash Dome Top

Post Receptacle

- 32-Gallon capacity
- Surface-mounted
- Includes flat top lid

Traditional Receptacle

- 32-Gallon capacity
- Portable
- Lid and liner sold separately

Receptacle Liner

- 32-Gallon capacity
- Made of high-density polyethylene (HDPE)

Flat Top

- For 32-gallon receptacles
- Inward sloping with 8" (0,20m) opening
- Steel construction

Recycle Flat Top

- For 32-gallon receptacles
- 5" (0,13m) diameter opening
- Steel construction

Recycle Dome Top

- For 32-gallon receptacles
- Made of durable molded plastic (black only)

Trash Dome Top

- For 32-gallon receptacles
- Made of high-density polyethylene (HDPE)
- Available in black, blue, brown, gray (shown), green & red

In-Ground Post

- Can be used with any style receptacle
- Embedded in ground

Surface Mount Post

- Can be used with any style receptacle
- Secured atop any hard surface

Site Furnishings *continued*

| Description | Item Number | Size | Weight | Materials |
|------------------------------------|-------------|---|-----------------------|---|
| Post Receptacle Receptacles | ZZPQL32 | 29in x 29in x 35in (0.74m x 0.74m x 0.89m) | 125 lbs (56.75 kg) | Frame: 2 3/8" Tubing, Base: 12 gauge sheet steel |
| Traditional Receptacle Receptacles | ZZPQL32Q | 25in x 25in x 33in (0.64m x 0.64m x 0.84m) | 85 lbs (38.59 kg) | Base: 12 gauge sheet steel |
| Receptacle Liner Receptacles | ZZPQL10N | 21in x 21in x 28in (0.53m x 0.53m x 0.71m) | 7 lbs (3.178 kg) | Liner: High Density Polyethylene |
| Flat Top Receptacles | ZZPQFT0N | 23in x 23in x 2in (0.58m x 0.58m x 0.04m) | 9 lbs (4.086 kg) | Frame: 18 Gauge Steel |
| Recycle Flat Top Receptacles | ZZPQFT6N | 23in x 23in x 3in (0.58m x 0.58m x 0.08m) | 7 lbs (3.178 kg) | Frame: 18 Gauge Steel |
| Trash Dome Top Receptacles | ZZPQDT0N | 23in x 23in x 11in (0.58m x 0.58m x 0.29m) | 12 lbs (5.448 kg) | Lid: HDPE |
| Recycle Dome Top Receptacles | ZZPQDT1N | 23in x 23in x 12in (0.58m x 0.58m x 0.3m) | 7 lbs (3.178 kg) | Top: Low Density Polyethylene |
| Inground Post Receptacles | ZZPQL00N | 13in x 9in x 24in (0.32m x 0.22m x 0.61m) | 12 lbs (5.448 kg) | Frame: 2 3/8" od x 12 gauge steel tubing; 14 gauge steel for mounting plate Hardware: Stainless Steel |
| Surface Mount Post Receptacles | ZZPQL05N | 13in x 9in x 5in (0.32m x 0.22m x 0.13m) | 12 lbs (5.448 kg) | Frame: 2 3/8" od x 12 gauge steel tubing; 14 gauge steel for mounting plate & 1/4" plate for surface mount plate Hardware: Stainless Steel |

BIKE STORAGE

Features

Accommodate bikers and keep your space tidy by providing a designated, sturdy storage structure for bikes. Rack or loop, surface-mounted or portable—we have a bike storage structure that meets your requirements and maintains an aesthetically-pleasing environment. Choose a powder coat color to match your park's color scheme and further ensure your receptacle doesn't rust, crack, peel, or warp over time.



Portable Eight-Bike Rack

Portable Eight-Bike Rack

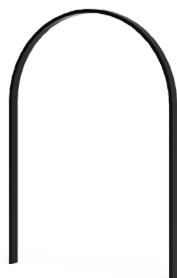
- Accommodates up to eight bikes
- 5' (1,52m) length
- Can be surface-mounted, if desired

Two-Bike Loop

- Accommodates up to two bikes
- In-ground and surface-mounted available

Multi-Bike Squiggle

- Accommodates up to five bikes
- In-ground and surface-mounted available

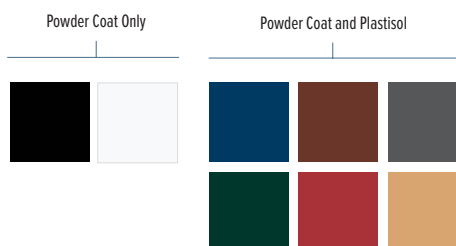


Two-Bike Loop



Multi-Bike Squiggle

COLOR OPTIONS



| Description | Item Number | Size | Weight | Materials |
|--|-------------|--|-----------------------|---|
| Portable Eight-Bike Rack Bike Storage | ZZPQBRIP | 59in x 39in x 32in (1.5m x 0.98m x 0.81m) | 69 lbs (31.326 kg) | Legs: 16 gauge x 1 5/8" steel tubing Supports: 16 gauge x 1 5/8" steel tubing Frame: 16 gauge x 1 5/8" steel tubing & 1/2" steel rod |
| Two-Bike Loop Bike Storage | ZZPQBRHI | 26in x 2in x 36in (0.65m x 0.04m x 0.91m) | 25 lbs (11.35 kg) | Frame: 1/2" x 1 1/2" Flat Bar Steel Support: 5/16" dia. rod |
| Two-Bike Loop Bike Storage Surface Mounted | ZZPQBRHS | 26in x 2in x 36in (0.65m x 0.04m x 0.91m) | 34 lbs (15.436 kg) | Frame: 1/2" x 1 1/2" Flat Bar Steel Surface Mount Plate: 3/8" plate steel |
| Multi-Bike Squiggle Bike Storage | ZZPQBRKI | 50in x 2in x 38in (1.28m x 0.06m x 0.96m) | 43 lbs (19.522 kg) | Frame: 13 gauge x 2 3/8" steel tubing |
| Multi-Bike Squiggle Bike Storage Surface Mounted | ZZPQBRKS | 50in x 6in x 38in (1.28m x 0.15m x 0.97m) | 41 lbs (18.614 kg) | Frame: 13 gauge x 2 3/8" steel tubing |

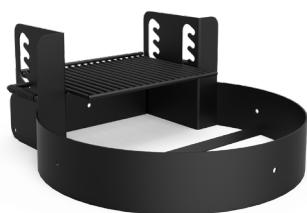
FIRE RINGS & GRILLS

Features

Fire rings and grills encourage family and friends to gather and stay at the park for a full day of fun. Whether installed under a shelter or in an open area, our sturdy steel cooking products are designed for extreme durability and safety. All rings and grills are painted with a non-toxic black enamel that is both heat and rust resistant to keep them looking brand new for many years.



Fire Ring



Adjustable Grate Fire Ring



Covered Grill



Group Grill



Adjustable Group Grill



Firebox

Fire Ring

- 300 square inches of cooking space
- Simple flip-up grate with cool spring handles
- Tilt back hinges for easy cleaning

Adjustable Grate Fire Ring

- 300 square inches of cooking space
- Adjustable to four positions with cool spring handles

Covered Grill

- 500 square inches of cooking space
- Fixed cooking grates can be tilted for easy cleaning
- Pedestal mounts permanently in-ground

Group Grill

- 1,368 square inches of cooking space accommodates large group meals
- Four-position fire grate and two hinged cooking grills
- Heavy duty cool spring grate handles
- Convenient utility shelf on one side

Adjustable Group Grill

- 1,008 square inches of cooking space
- Two separate cooking grates adjustable to four levels
- Anti-theft grate slot design
- Convenient utility shelf on one side

Firebox

- 300 square inches of cooking space
- Theft-resistant cooking grate
- Adjustable to four levels
- Flips back for easy fire starting and cleaning

Vandal-Resistant Firebox

- Most vandal-resistant pedestal grill
- 300 square inches of cooking space
- Adjusts to four heights
- Heavy duty cool spring grate handles

Site Furnishings *continued*

| Description | Item Number | Size | Weight | Materials |
|--|-------------|---|-------------------------|--|
| Fire Ring Fire Rings & Grills | ZZPQG06N | 30in x 30in x 9in (30m x 30m x 9m) | 95 lbs (43.13 kg) | |
| Adjustable Grate Fire Ring Fire Rings & Grills | ZZPQG03N | 31in x 34in x 15in (0.79m x 0.86m x 0.38m) | 86 lbs (39.044 kg) | Grate: 1/2" steel rod. Fire ring: 3/16" thick steel. |
| Covered Grill Fire Rings & Grills | ZZPQG05N | 18in x 42in x 18in (0.46m x 1.05m x 0.46m) | 188 lbs (85.352 kg) | Post: 3 1/2" steel tubing. Grate: 1/2" steel rod. Fire box: 10 gauge thick steel. Heat resistant paint. |
| Group Grill Fire Rings & Grills | ZZPQG04N | 51in x 43in x 10in (1.3m x 1.09m x 0.25m) | 460 lbs (208.84 kg) | Post: 6" square steel tubing. Grate: 1/2" steel rod. Fire box: 3/16" thick steel. Heat resistant paint. |
| Adjustable Group Grill Fire Rings & Grills | ZZPQG02N | 36in x 28in x 10in (0.91m x 0.71m x 0.25m) | 246 lbs (111.684 kg) | Post: 6" square steel tubing. Grate: 1/2" steel rod. Fire box: 3/16" thick steel. Heat resistant paint. |
| Firebox Fire Rings & Grills | ZZPQG00N | 20in x 15in x 10in (0.51m x 0.38m x 0.25m) | 79 lbs (35.866 kg) | Post: 2 3/8" steel tubing. Grate: 1/2" steel rod. Fire box: 3/16" thick steel. Heat resistant paint. |
| Vandal-Resistant Firebox Fire Rings & Grills | ZZPQG01N | 20in x 15in x 10in (0.51m x 0.38m x 0.25m) | 79 lbs (35.866 kg) | Post: 2 3/8" steel tubing. Grate: 1/2" steel rod. Fire box: 3/16" thick steel. Heat resistant paint. |