

PLAY SHADE

PLAY SHADE



Get More from Your Playground & More for Your Money

Why shade?

Playgrounds are a big investment—and like any other investment, you want to feel confident that you're getting the most value and the best quality for your dollar. Play Shade offers that added assurance—protecting your playground equipment and amenities while improving the guest experience.

The right fabric structure can block up to 96% of harmful UV rays, and can make your playground up to 20 degrees cooler year-round, allowing for longer play. Shade can also make your playground more inclusive—some children and adults have sun allergies, and others are more susceptible to sun poisoning and overheating due to certain medications. These medications are commonly used by children who have epilepsy, cerebral palsy, and autism. Children with these conditions might be unable to go to a playground unless there's adequate shade.



Blocking up to
96% of the sun's
UV rays



Keeping your
playground
20° cooler



Protection
from inclement
weather

Playworld Play Shade Advantage

- Comes in a variety of fabric and post colors that match your playground
- Provides quick release options (QRE) to facilitate fabric attachment/removal
- Ensures greater quality control and comprehensive customer support
- Requires little to no maintenance



Single Post Pyramid

- Small footprint solution
- Up to 260 sq. feet of shade from a single column
- Ideal for shading benches/tables
- Quick release available
- Embedded or recessed base plate mounting

Sizes

12' x 12'

14' x 14'

16' x 16'

Entry Heights

8'

10'





Single Post Pyramid Cantilever

- Shaded area free of columns
- Quick release available
- Recessed base plate mounting only

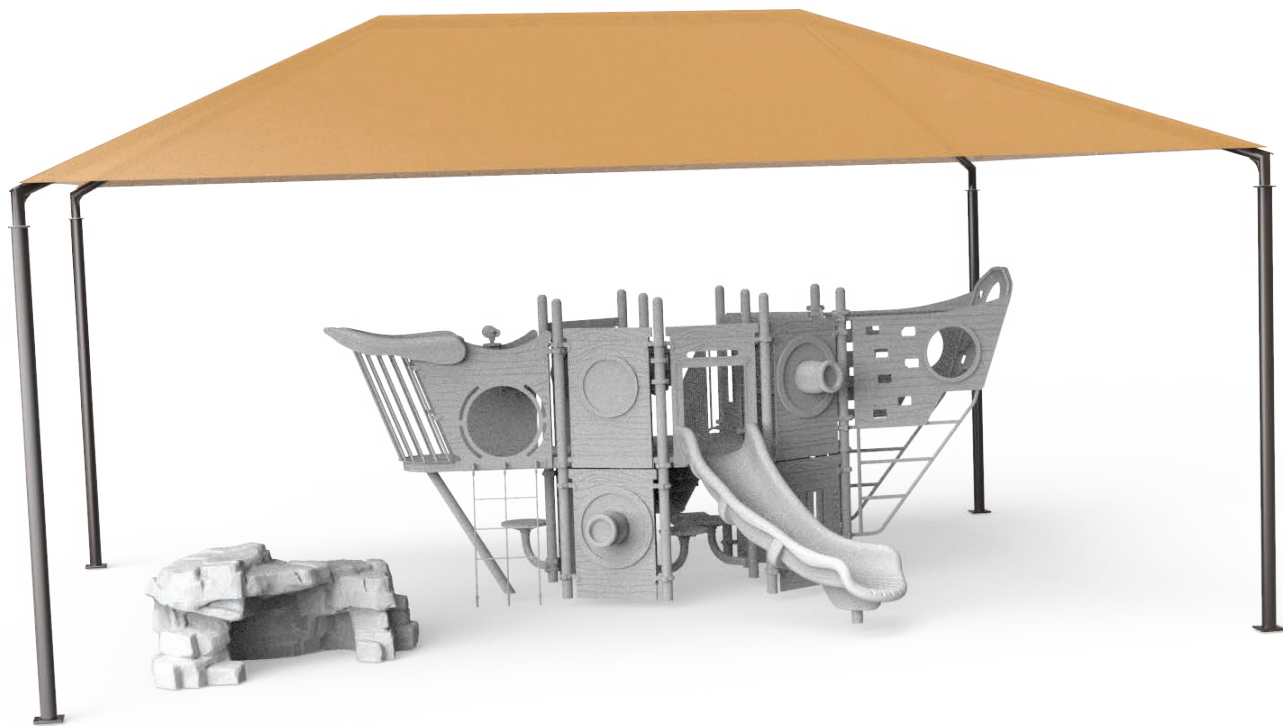
Sizes

12' x 12'
14' x 14'
16' x 16'

Entry Height

8'





Hip

- Commonly used to shade large play structures
- Features clean, straight lines
- Quick release available

Sizes

10' x 20'
15' x 25'
18' x 36'
20' x 24'
20' x 30'
20' x 34'
24' x 30'
24' x 40'
30' x 40'

Entry Heights

8'
10'
12'





Hip Joined

- Shares steel posts to reduce columns and increase shade footprint
- Perfect for areas needing more extensive coverage
- Commonly used to shade large play structures
- Quick release available
- Embedded or recessed base plate mounting

Sizes

30' x 60'

Entry Height

12'





Two-Post Hip

- Most cost-effective design
- Up to 308 sq. feet of shade from two columns
- Quick release available
- Embedded or recessed base plate mounting

Sizes

10' x 16'

16' x 22'

Entry Height

8'





Pyramid

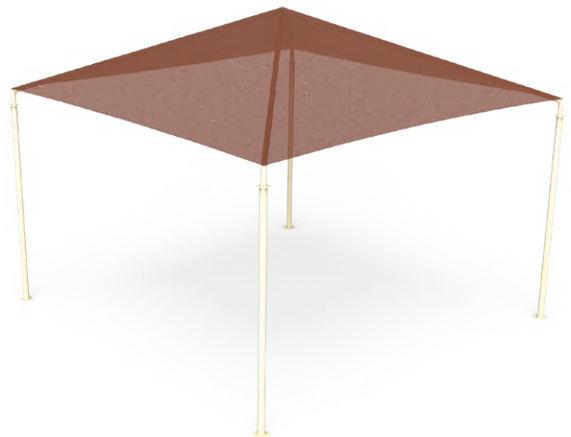
- Four-post solution ideal for areas needing extensive coverage
- Features a square, peaked roofline
- Commonly used to shade large play structures
- Quick release available
- Embedded or recessed base plate mounting

Sizes

10' x 10'
14' x 14'
20' x 20'
24' x 24'
30' x 30'

Entry Heights

8'
10'
12'





Mariner Pyramid

- Features distinctive overlapping fabric design for sophisticated aesthetic
- Provides same amount of shade as standard Hip and Pyramid structures
- Perfect for large play structures, outdoor dining, or seating
- Quick release available
- Embedded or recessed base plate mounting

Sizes

20' x 20'
30' x 30'

Entry Height

12'





Full Cantilever

- Great option for areas needing extensive coverage free of columns
- Ideal for a wide variety of applications, from play structures to bleachers
- Quick release available
- Recessed base plate mounting

Sizes

10' x 12'
10' x 20'

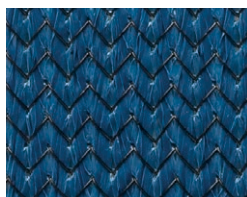
Entry Heights

8'
10'

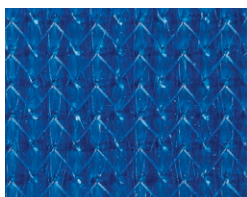


SHADESURE™ Fabrics

PASSES: NFPA 701 / ASTM-E84



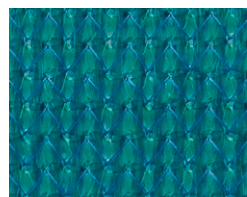
NAVY BLUE
90% shade factor 94% UV factor



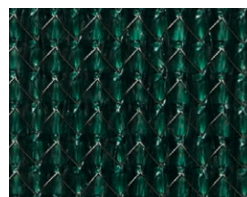
ROYAL BLUE
86% shade factor 94% UV factor



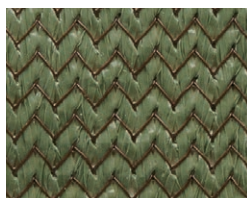
LAGUNA BLUE
91% shade factor 96% UV factor



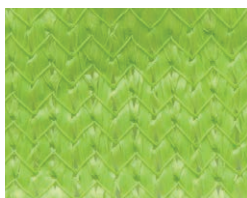
TURQUOISE
83% shade factor 92% UV factor



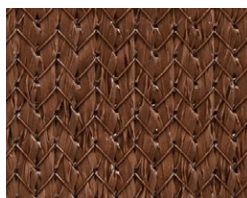
RAINFOREST
89% shade factor 96% UV factor



OLIVE
89% shade factor 95% UV factor



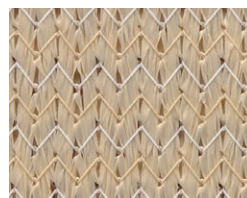
ZESTY LIME
84% shade factor 92% UV factor



CHOCOLATE
92% shade factor 93% UV factor



CINNAMON
92% shade factor 93% UV factor



ARIZONA
84% shade factor 92% UV factor



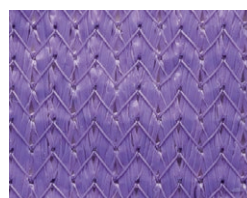
DESERT SAND
80% shade factor 92% UV factor



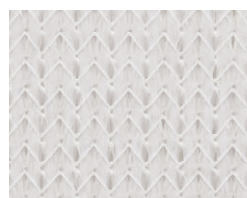
TERRACOTTA
84% shade factor 90% UV factor



SUNFLOWER YELLOW
70% shade factor 94% UV factor



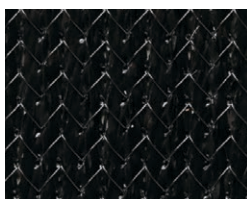
ELECTRIC PURPLE
83% shade factor 91% UV factor



WHITE
57% shade factor 86% UV factor



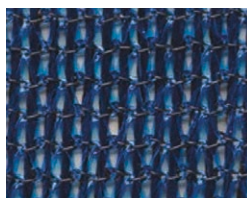
SILVER
88% shade factor 93% UV factor



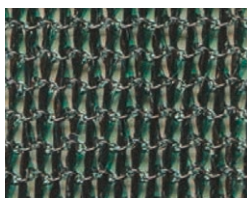
BLACK
95% shade factor 96% UV factor

COLOURSHADE® FR Fabrics

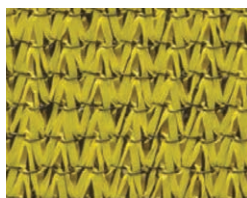
PASSES: NFPA 701 / ASTM-E84 / OSFM TITLE 19



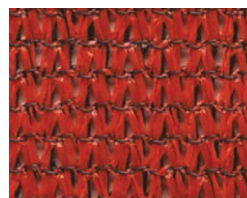
BLUE
80% shade factor 85% UV factor



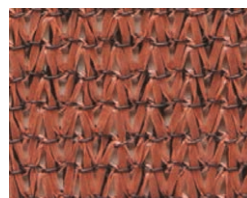
GREEN
80% shade factor 85% UV factor



YELLOW
80% shade factor 89% UV factor



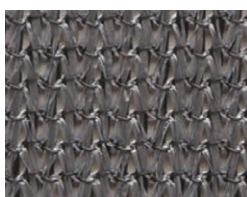
RED
80% shade factor 86% UV factor



TERRACOTTA
75% shade factor 82% UV factor



DESERT SAND
80% shade factor 92% UV factor



SILVER
80% shade factor 81% UV factor

Standard Steel Powder Coats

				
RED	YELLOW	TROPICAL YELLOW	ORANGE	LIME
				
CHARTREUSE	GREEN	FOREST GREEN	TEAL	AZURE
				
BLUE	COBALT	PINK	LAVENDER	PLUM
				
BEIGE	SAND	BROWN	DARK BROWN	WHITE
				
SILVER	LIGHT GRAY	METALLIC GRAY	BLACK	

Shadesure™ fabrics carry a 10-year limited manufacturer's warranty from the date of installation, with the exception of Red, Yellow, Electric Purple, Zesty Lime, Cinnamon, and Olive fabrics which carry a 5-year limited warranty. The samples of the colors of the steel and the fabrics shown in this document are for demonstrative purposes and are subject to the printing capacities. Please contact us for physical samples of fabric and steel colors.

Your authorized Playworld representative is:



1000 Buffalo Road, Lewisburg, PA 17837-9795 USA

Phone: +1.570.522.9800 Toll-free: 800.233.8404

Playworld.com     

Playworld Systems, Inc. is a PlayPower, Inc. company.

©2018 PlayPower, Inc. All rights reserved.

